

3 Adjustment of 10 MHz Crystal

This software can be used to adjust the 10 MHz reference of the R&S SM300. To do this, you need the following equipment:

- R&S SM300 reference calibration software (available from the GLORIS firmware/software board)
- PC with USB port; OS: Win98/Win2000/WinXP
- Frequency counter with 0.1 Hz accuracy at 10 MHz

3.1 Device Installation

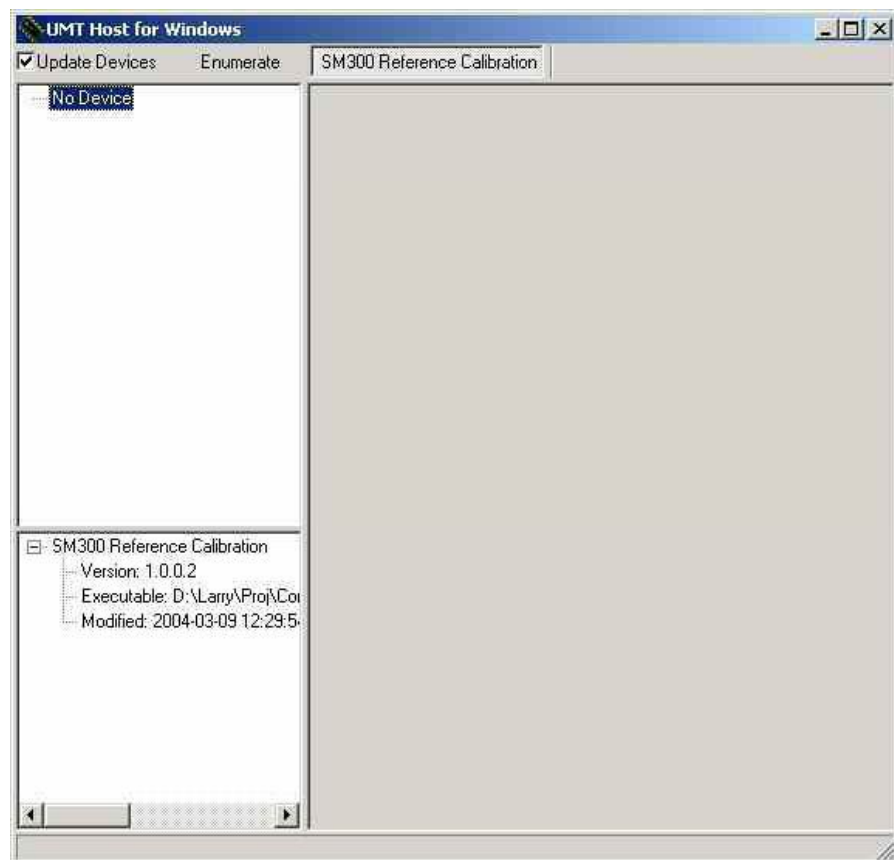
When the R&S SM300 is connected to the PC via a USB, the operating system detects the new USB device. You may be required to enter the location of the driver. The driver is supplied with the software in subfolder driver.

3.2 Software Execution

1. Run `umt_host.exe`.

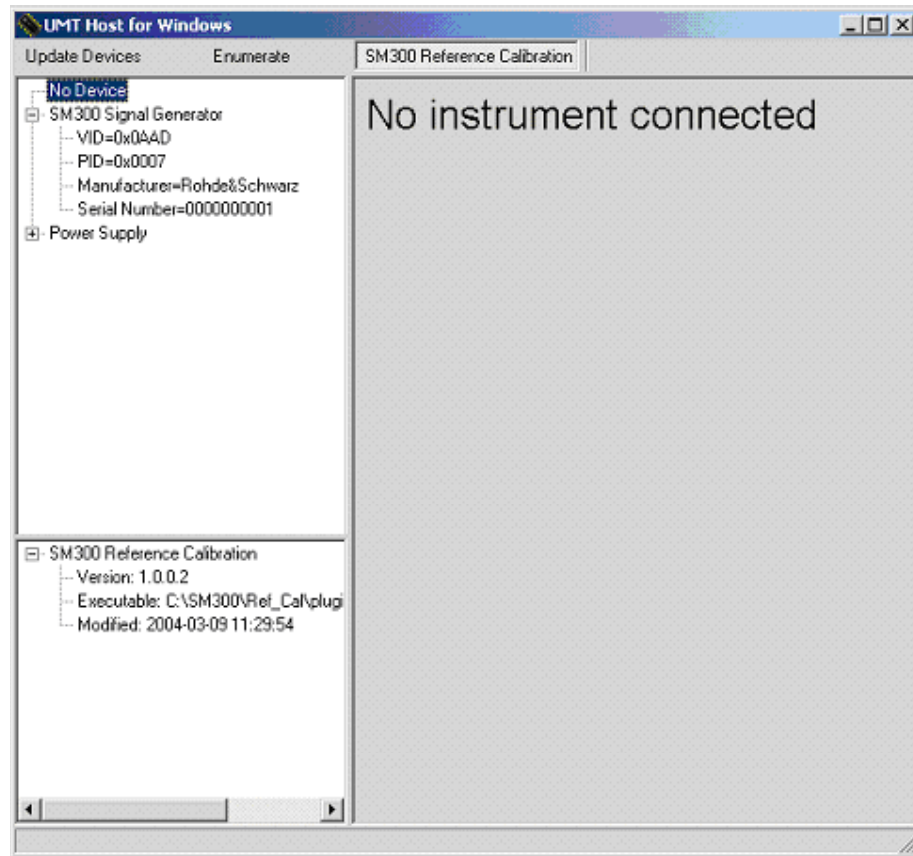
If there is no active device on the USB, the following window will appear:

Application window if no USB device is active



If the device is active, the application window detects it and displays the list of available devices in the upper left pane; see “Main window with default values” above.

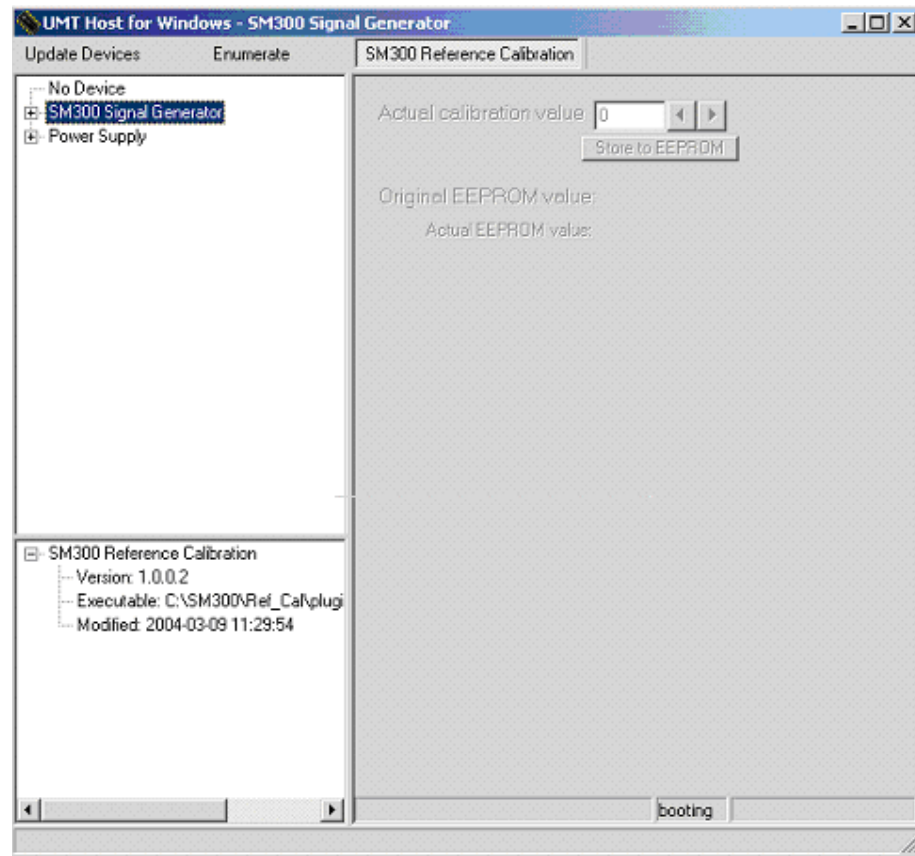
Application window after detecting active devices



2. To display the calibration window, click on SM300 Signal Generator.

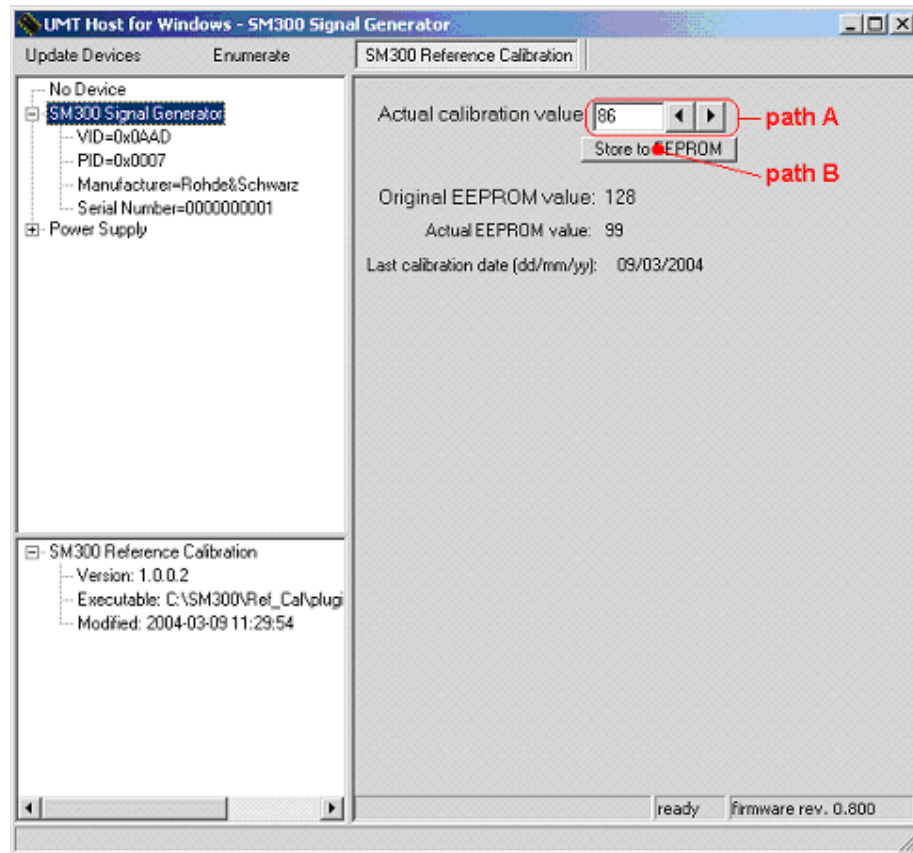
If the device is booting, a disabled window will appear; see “Application window if selected device is booting” below.

Application window if selected device is booting



If the device is ready for operation, the following window will appear.

Application window if selected device is ready



Calibration scheme

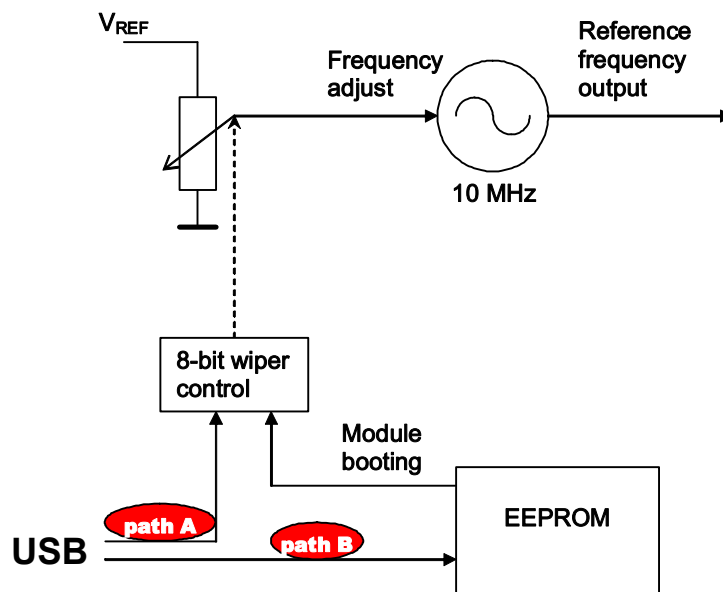


Figure 3-1